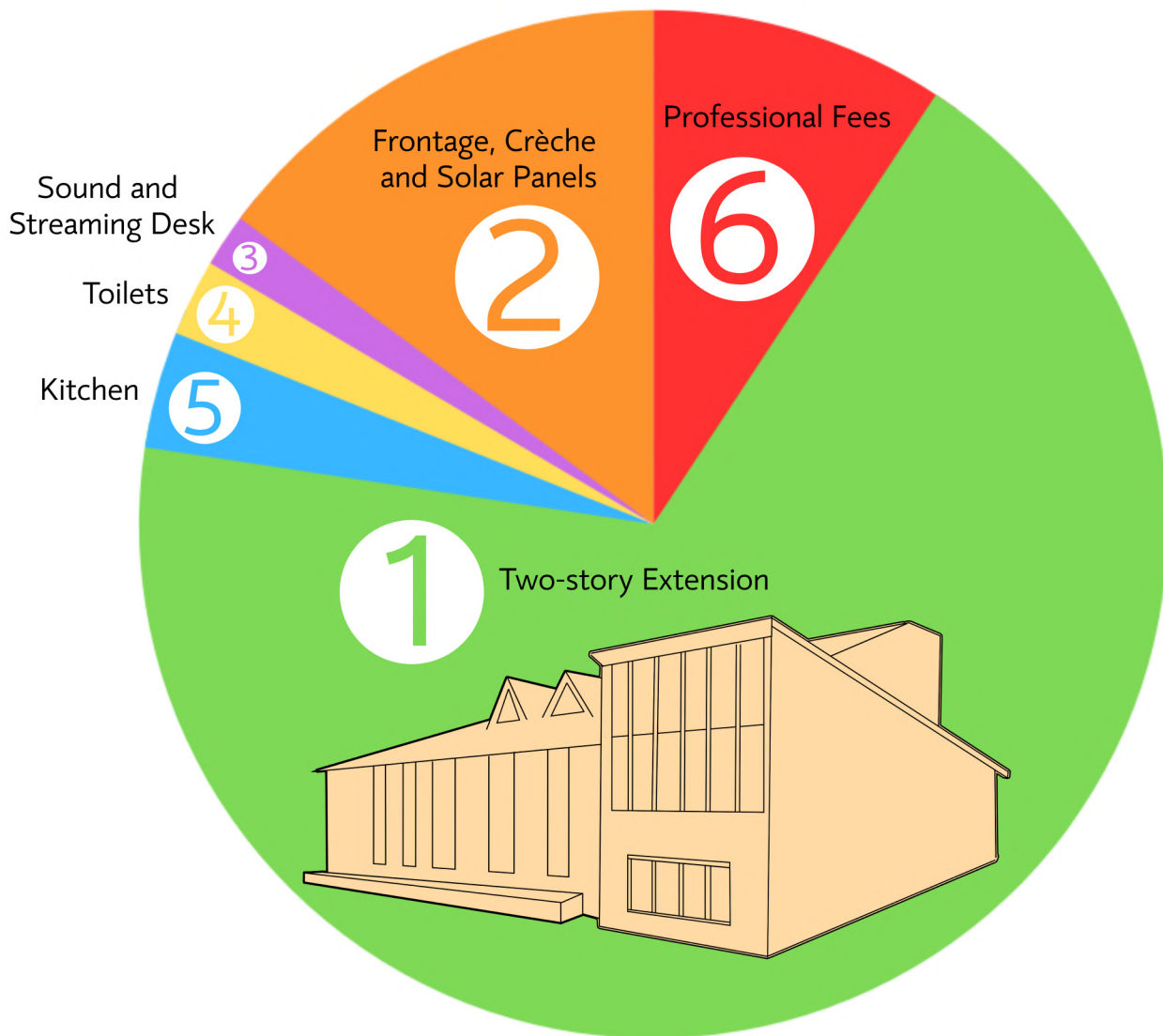


BUILDING THE FUTURE



Total budget: £828,000

1 Two-story Extension: £560k
Groundworks, build out costs, fit out, decoration and furnishings.

2 Frontage, Crèche and Solar Panels: £120k
Open up frontage & rework glass entrance area, improved access to rear garden, increase & update welcome space area, covered pushchair & wheelchair area in garden, update disabled access to front welcome area, photo voltaic panel installation on roof of 1980's auditorium, crèche upgrade.

3 Build new small mezzanine sound and streaming desk: £18k

4 Rebuild and improve toilet facilities: £20k

5 Kitchen: £30k
Move and rebuild larger kitchen, fit out.

6 Professional Fees: £80k
Architect, Structural Engineer, Archaeologist, Quantity Surveyor, Legals and Specialists, Tree Consultant

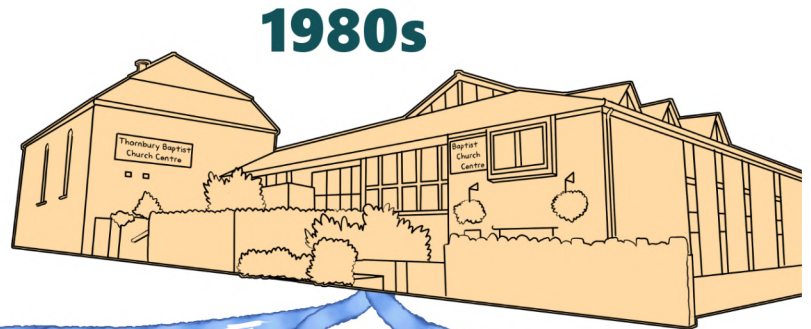
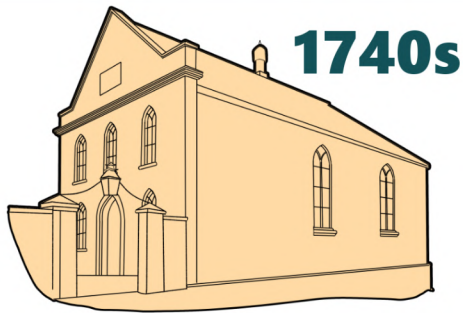


Thornbury Baptist Church

For more information or to donate, scan the QR code or go to www.thornburybaptistchurch.org.uk/building
Following the way of Jesus

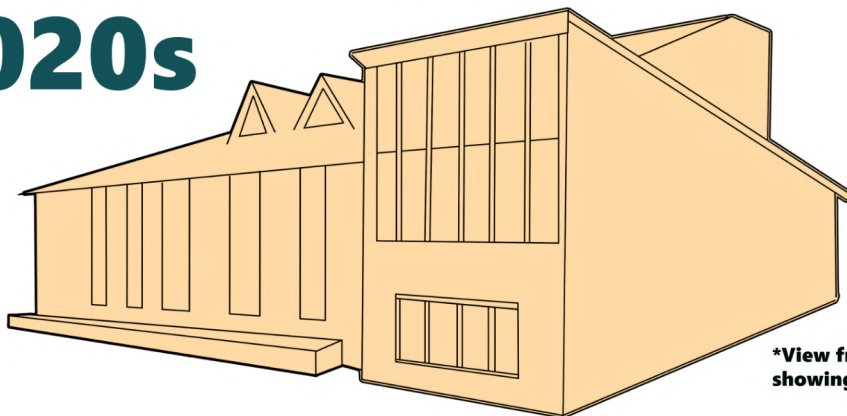


BUILDING THE FUTURE



2020s

**JOHN
13:35**



**Mark
12:30-31**

**View from back of church
showing new extension*

**LOVING GOD, ONE ANOTHER AND THE WORLD
SERVING GROWTH
EXPAND OUTREACH**